

MACH II™ 5", 6", AND 5"/6"

**GUTTER MACHINE
SELECTION GUIDE**

PRODUCTS • PRICES • CONSIDERATIONS





THANK YOU FOR DOWNLOADING THIS INFORMATIVE GUIDE ON MACH II™ PORTABLE SEAMLESS GUTTER MACHINES.

You've taken the first step toward owning the highest-quality portable rollforming machine on the market.

New Tech Machinery (NTM) introduced the MACH II Seamless Gutter Machine in 1994. In fact, the first gutter machine NTM ever produced recently returned to the NTM headquarters and is now housed in our lobby. Although somewhat worse for wear after 30 years of service, it still runs a perfect gutter!

NTM was the first portable rollforming company to commercially produce and market a polyurethane drive roller machine with separate forming rollers. Our seamless gutter machines revolutionized the metal construction industry by bringing portable rollforming products directly to the job site. Thanks to

this innovative approach to rollforming, contractors can fabricate customized, seamless gutters on-site to provide a superior product to their customers. For over 30 years, NTM has helped contractors build their businesses. With the highest-quality machines, technical support and training, and the industry's best warranty, we remain leaders in the portable rollforming industry. Our customers return year after year to purchase more of our machines as their businesses grow. At NTM, we realize that our success is built on the success of our customers. Therefore, our engineers and service members continuously find new ways to improve our machines as technology develops.

We are dedicated to your success and value customer feedback so that your operation runs smoothly as soon as your NTM gutter machine arrives at a job site.

Use this guide to learn answers to common questions about choosing the right Mach II gutter machine and find pricing for all Mach II gutter machine configurations and accessories. We'll cover the most important accessories, essential gutter equipment, and the estimated costs of starting a gutter operation.

WHICH MACH II PORTABLE GUTTER MACHINE IS RIGHT FOR ME?

The Mach II gutter machines manufacture K-style gutters, the most prominent style of gutter found on North American homes today. They typically have a flat bottom and profiled face, similar to the look of crown molding. This gutter type can also handle more than double the amount of water runoff than a half-round gutter.

5" gutters are typical in most states, but areas that experience significant rainfall, such as Florida, as well as larger residential jobs, lean toward 6" gutters, the same as light commercial. While 26 gauge is the standard for steel gutters, southern regions that experience severe storms often use a heavier 24 gauge. In Canada, the lighter 28 gauge is the norm. Aluminum

is the most popular metal because it's affordable, easy to maintain, and resists rust. Steel, while it costs a bit more, is popular in some areas due to its durability.

A Mach II can run all the following materials in 5" or 6" gutters:

- Painted Steel (painted, Galvalume, coated galvanized): 30 ga. to 24 ga. (.3mm to .6mm)
- Painted Aluminum: .019" to .032"
- Copper: 16 oz. to 20 oz. $\frac{3}{4}$ hard (.5mm to .7mm)

As regions differ, you must determine which Mach II machine option will produce the right gutter for your customers.



MG5-M **\$10,000**

Mach II 5" machine with two turnstile reel stands, two reels, and shear



MG5-C1 **\$10,300**

Mach II 5" one turnstile reel stand and reel, one coil cradle, and shear



MG5-C2 **\$10,400**

Mach II 5" machine with two coil cradles and shear



MG5 **\$9,000**

Mach II 5" basic machine with shear (no reels, reel stands, or cradles)



MG5-E **\$8,100**

Mach II 5" economy machine (no reels, reel stands, cradles, or shear)



MG6-M **\$11,600**

Mach II 6" machine with two turnstile reel stands, two reels, and shear



MG6-C1 **\$11,800**

Mach II 6" machine with one turnstile reel stand and reel, one coil cradle, and shear



MG6-C2 **\$11,900**

Mach II 6" machine with two coil cradles and shear



MG6 **\$10,500**

Mach II 6" basic machine with shear (no reels, reel stands, or cradles)



MG6-E **\$9,500**

Mach II 6" economy machine (no reels, reel stands, cradles, or shear)



MG56-M **\$14,600**

Mach II 5 1/2" machine with two turnstile reel stands, two reels, and two shears



M56-C1 **\$14,800**

Mach II 5 1/2" machine with one turnstile reel stand & reel, one coil cradle, & two shears



M56-C2 **\$14,900**

Mach II 5 1/2" machine with two coil cradles & two shears



M56 **\$13,200**

Mach II 5 1/2" basic machine with two shears (no reels, reel stands, or cradles)



M56-E **\$11,200**

Mach II 5 1/2" economy machine (no reels, reel stands, cradles, or shears)

WHAT SIZE MACH II GUTTER MACHINE DO I NEED?

If your market demand is only for one size, you can purchase the Mach II 5" or Mach II 6" gutter machine. However, if you want to offer both 5" and 6" gutters, the Mach II 5 1/2" Combo Gutter Machine is your best option as it provides the most flexibility.

DOES THE MACH II GUTTER MACHINE USE PUSH-BUTTON CONTROLS OR A DRUM SWITCH?

All NTM Mach II machines use push-button controls, considered the better option for controlling the machine. They are easier and more efficient to use than drum switches.

DOES THE MACH II HAVE A COMPUTER CONTROLLER?

The MACH II comes standard with push-button controls. However, you can purchase the Remote 4-Button Control with start/stop/forward/reverse functions to allow for remote control of the machine. For maximum functionality, the EZ-Counter Computerized Length Controller features an easy-touch screen.

WHAT WARRANTIES, SERVICE, & SUPPORT DOES NTM OFFER?

NTM provides a limited three-year part and NTM in-house labor warranty. Service and support are available by call-in or appointment. For servicing by one of our specialists, you can either schedule a time to bring the machine to our plant in Aurora, Colorado, or arrange for an NTM technician to come to your location. NTM also offers free training for all new machine owners and crews at our Colorado facility. Training can help ensure optimal performance, proper maintenance, and safe operation of your machine. Training is strongly recommended for all new machine owners and their operators. You can also arrange for training at your location; however, fees and expenses apply. Call the NTM service team for more details.

HOW CAN ACCESSORIES BENEFIT MY GUTTER OPERATION?

Accessories can improve the efficiency of your Mach II machine. Some optional features can even enhance the quality of the finished product, such as:

**REELS &
COIL
CRADLES**

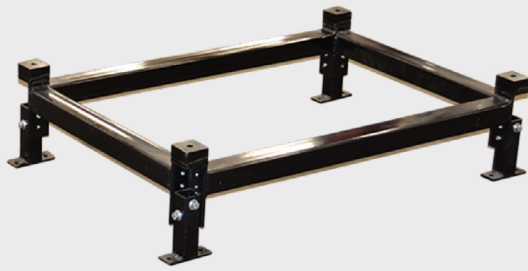
SHEARS

**RUN-OUT
STANDS**

CONTROLLERS

**HOOK &
BOTTOM BEAD
ASSEMBLIES**

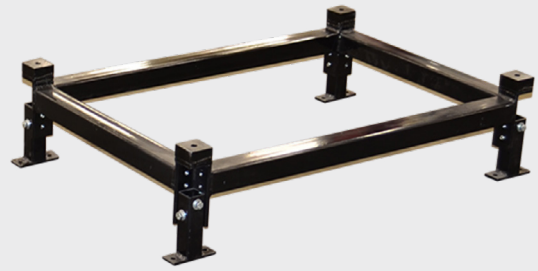
In the next few pages, we'll highlight a few of our most popular accessory options and how they can help you get more out of your Mach II machine.



RISER6-8

\$690

Riser pad to raise machine 6" - 8"



RISER10-12

\$690

Riser pad to raise machine 10" - 12"



REM-6-A

\$2,700

Remote 4-button start/stop/forward/reverse
for 110-volt - 220-volt



REM-6-C

\$2,250

Remote 4-button start/stop/forward/reverse
for 12-volt DC



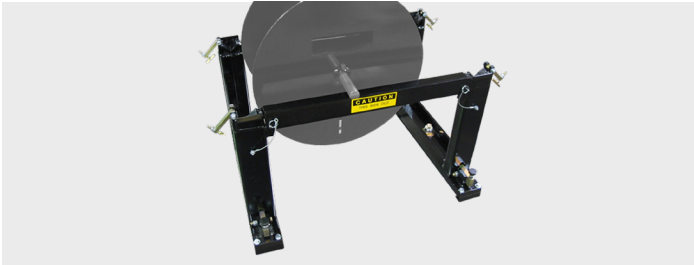
TRN 5 **\$345**

Turnstile reel stand



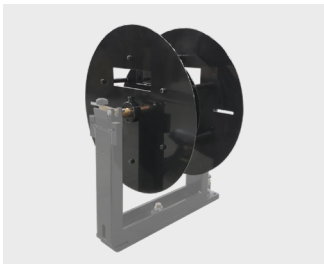
RL16 **\$650**

16" ID adjustable width reel
Maximum weight: 1,000 lbs.



RAC **\$335**

Transfer rack for reel stands



RL20 **\$650**

20" ID adjustable width reel
Maximum weight: 1,000 lbs.



RSG1 **\$265**

Single run-out stand



RSG3 **\$665**

Set of three run-out stands

SHOULD I CHOOSE A REEL OR COIL CRADLE?

Some operators prefer the traditional reel with NTM's turnstile reel stand, which holds up to 1,000 lbs. of coil. However, others prefer coil cradles with their 400 lbs. capacity. Either can be machine or floor-mounted. With the Mach II, you also have the option to use both!

COIL CRADLES

It's easier to load coil onto a cradle than a reel since the coil weight is typically lighter and it doesn't require a forklift to place the coil onto the cradle. It's your best option for small jobs or specialty coils used infrequently. If you're doing only jobs requiring the same color and metal, then you can rely on reels that hold more coil.

Note: To avoid potential coil damage, NTM recommends not transporting the coil on the cradle but loading it at the job site.

REELS

Reels can hold a larger diameter coil than the cradle, so you can put your most used color, for example white, on the coil, then use the cradle for smaller coils with custom colors. The reels are adjustable in width to hold 11-3/4" through 15" wide coil for 5" and 6" gutters. The cradles widths are also adjustable.

BOTH CRADLES AND REELS

What's great about using both cradles and reels is that they can work in combination, so you can have two reels with your most popular coil and a cradle with a specialty coil. Or one reel and one cradle, or two cradles and one reel. You can change configurations on your machine as needed, given that you have the accessories. That way, you're always ready to move from job to job with the right materials.

The turnstile reel stands are mounted to the machine to support reels loaded with coil. They also rotate 360 degrees for easy loading and movement. Each machine can support up to three reel stands or coil cradles (or any combination of the two).



CR5/6

\$1,275

5" or 6" cradle
Maximum weight: 400 lbs.



HK

\$1,335

Hook assembly for 5", 6", or 5"/6" machine



BB5

\$690

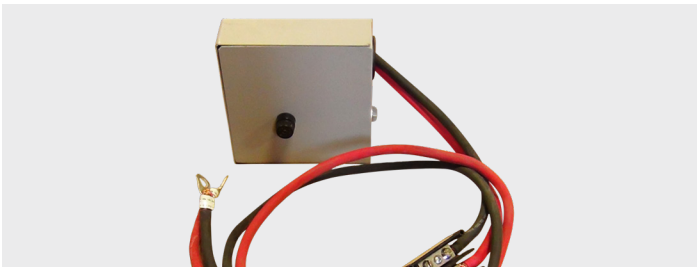
5" bottom bead option*
Not available for economy machines.



BB6

\$690

6" bottom bead option*
Not available for economy machines.



MG12V

\$1,400

12-volt system

DO I NEED A SHEAR?

The base Mach II configuration does not include a shear, but our other configurations include the forward-pulling geared shear, which ensures a clean, consistent cut and saves much time over hand snips. While a shear is not a must, it's recommended if you want to speed up production.

HOW ESSENTIAL ARE RUN-OUT STANDS?

Run-out stands support the gutter as it exits the machine and protect it from bending or scratching. They are a must-have for any seamless gutter operation, as they help protect the gutter and keep it level as it forms from the machine. The run-out stand, held by a sturdy tripod, can be adjusted in height from 22.5" to 53.5", with an open dimension width of 5"-7" to accommodate any size Mach II gutter. The stand also features UHMW plastic for scratch-free and easy movement. It requires less maintenance than roller stands, as it doesn't use bearings that can wear down. The tripod's folding legs allow for easy storage. We recommend a run-out stand for every 20' of gutter.

I'M FAMILIAR WITH PUSH-BUTTON CONTROLS, BUT WHAT'S THE EZ COUNTER COMPUTERIZED LENGTH CONTROLLER?

The EZ Counter Computerized Length Controller exemplifies NTM's commitment to engineering that supports our customers in the field. It allows operators to easily program up to 50 different lengths to run the correct length of gutter automatically. The EZ Counter Controller also offers a mitered end option to account for the extra length they require at the corners or transitions, and operates in feet, inches, or centimeters. It manages material tracking, and operates using an easy-touch screen. This optional controller provides more accurate measurements than measuring the gutter length by hand. It's another NTM time-saver that helps streamline your operation.

WHAT ARE THE ASSEMBLY OPTIONS?

There are two assembly options: The hook and the bottom bead. Each is designed with a different purpose.

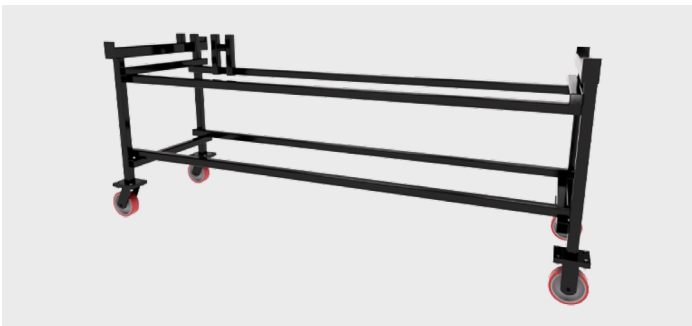
HOOK ASSEMBLY

The hook assembly is another roller station that's added to the machine to create a 5/16" hook on the back of the gutter profile for use with a free float hanger system. A hook crosses the gutter, and hung under the flashing, and then a nail fastens the gutter to the roof beam. It's a secure, sturdy system that allows the water to pour directly into the gutter since it's placed underneath the pitch of the roof. Also referred to as "Alcoa style", it's mainly used in Northeast U.S., and provides another way of hanging the gutter via a hook that attaches to the fascia.

BOTTOM BEAD ASSEMBLY

Bottom beads can help stiffen the bottom of the gutter and add a slightly more decorative look. The extra support the bottom bead provides allows for easier installation of longer lengths. They are not available for economy machines.

You will need two separate assemblies for 5" and 6" gutters for combo machines.



MG-CART

\$2,175

Cart for 5", 6", or 5"/6" gutter machine with casters (two are locking)



CVR-GM5

\$1,380

5" gutter machine canvas cover kit



CVR-GM56

\$1,830

6" and 5"/16" gutter machine canvas cover kit



EZC-G110

\$2,750

EZ Counter Computerized Length Controller
Flange/shear options quoted upon request.



PURCHASING ESSENTIAL EQUIPMENT & STARTING A BUSINESS WITH YOUR NTM PORTABLE SEAMLESS GUTTER MACHINE

To transport your gutter machine and equipment, you'll need a reliable covered truck or cargo van large enough to haul the machine. The cost of a used truck or van can range from around \$10,000 to \$35,000, depending on condition, mileage, and age, or you can buy a new one if you're ready to commit to a bigger investment. Or, you can use a shell or another form of cover if you're keeping your machine on an open trailer. Either way, choosing a transport that can handle the weight and size of your gutter machine is essential. The Mach II weight ranges from 1,000 lbs. to 1,350 lbs., depending on the size you choose. In addition to the truck or van, you'll need tools such as ladders, drills, snips, hammers, levels, and tape measures. The cost of these tools can range from \$1,000 to \$2,500, depending on the quality and brand.

To start your gutter business, you'll need to consider the cost of materials such as aluminum or steel coils, gutter hangers, downspouts, elbows, screws, and

sealants. The prices of these materials may vary based on location, quantity, and quality. Another consideration will be inventory. You'll want to keep a stock of all your materials on hand so that a supply shortage doesn't interrupt your workflow. Otherwise, you're going to waste time running to suppliers between jobs. This also means you'll need storage space. Plan on budgeting between \$2,000-\$3,000. Administrative costs include state and city licenses and permits as required, filing your business as an LLC, insurance coverage, and basic office infrastructure. Total costs can vary, depending on your state and local requirements.

If you're just starting a gutter business, consider the following: how to get financing (if needed), the gutter profile and size options for your demographic, skilled crew members who can run and maintain the machine, and related expenses (trailer or truck materials and tools, gas expenses, etc.).